

Travel Drives

Final Drives 2 - Speed

Output torque max.

40000 Nm

Input speed max.

3500 rpm

Applicable hydraulic motors

Bosch-rexroth: A6VE55 ~ 107 range

Linde: HVM 55 ~ 75 range

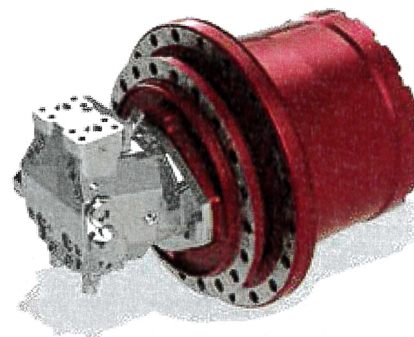
Sauer danfoss: 51C 060 ~ 080 range

Technical features

- Two gear shifting transmission
- Wet disc clutch unit
- Power shift capability
- Hydraulic controlled shifting
- Integrated park & emergency brake
- Optional cooling flow to input stage and clutch unit
- Different hydraulic motors
- Wide variety of ratio combinations

Applications

- Road paving machines
- Construction machines
- Cranes
- Drilling machines
- Winches
- Agricultural machines
- Forestry machines



RATIO COMBINATIONS

Shifting stage versions	Shifting stage ratio ISS
1	5.77
2	5.42
3	4.87*
4	4.44
5	4.26
6	3.81

Main stage versions	Shifting stage ratio IMS
A	19.25
B	26*
C	32.14

All ratios ISS combinable with all ratios IMS

Final ratio if = ISS*IMS

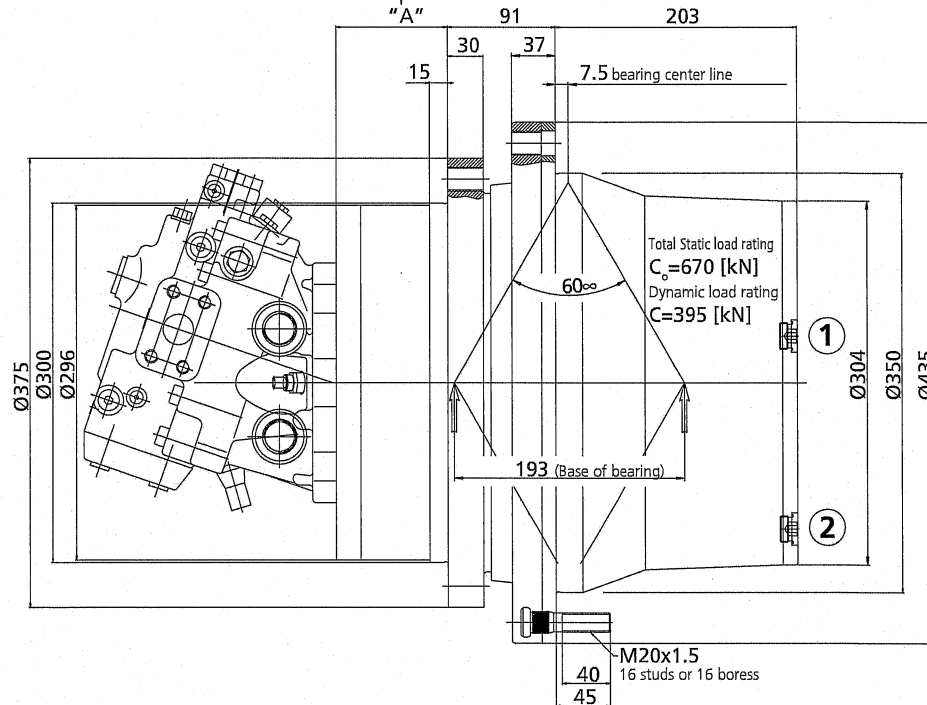
* Preferred ratios

Brake torque at input shaft	Nm	600
Brake torque at output min.	Nm	40000
Clutch operating pressure	bar	40 ~ 60
Oil quantity	l	3.3
Weight	kg	186

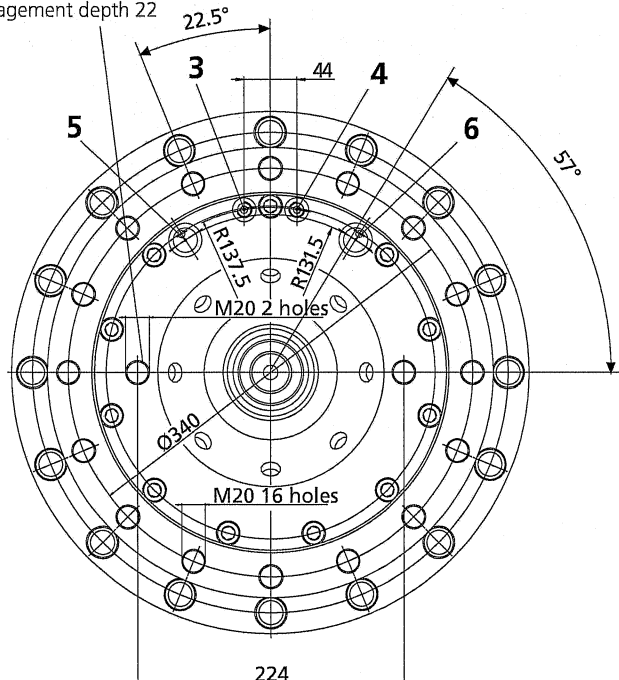
Overall dimensions and technical data

"A" = 94 for hydraulic motors:
 Sauer 51C080 D3
 Linde HMV75
 Rexroth A6VE80

"A" = 124 for hydraulic motors:
 Sauer 51C110
 Rexroth A6VE107



Hydraulic motor screw engagement depth 22



PORT	PRESSURE	FUNCTION
3	40 bar	Small clutch piston pressurized T/M ratio lowgear
4	40 bar	Large clutch piston pressurized T/M ratio highgear
3 & 4	0 bar	Large & small clutch engaged, T/M in park break position

1. Oil filling plug M22×1.5
2. Oil draining plug M22×1.5
3. Low speed clutch port R1/4" G acc. DIN3852 "X"
4. High speed clutch port R1/4" G acc. DIN3852 "X"
5. Flushing oil input port M22×1.5 DIN3852 "X"
6. Flushing oil output port M22×1.5 DIN3852 "X"